



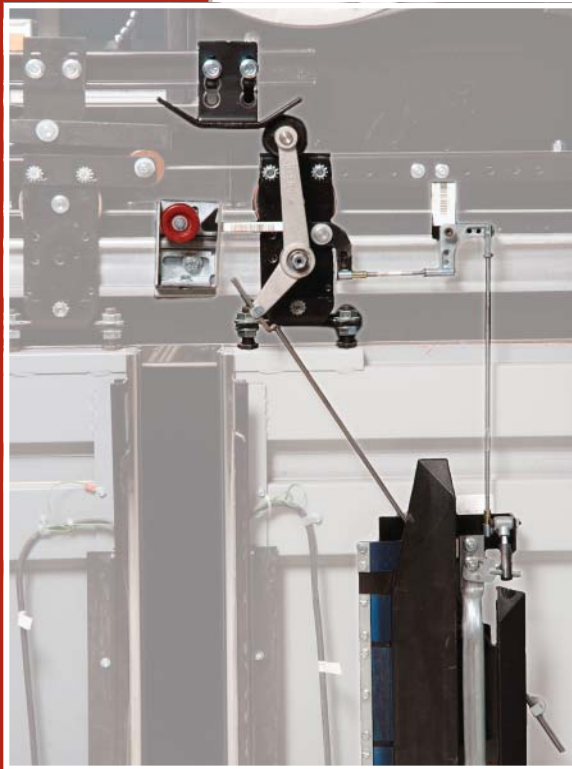
vertical express

Door Restrictor Clutch Kits

Keep Passengers Safe

Vertical Express Door Restrictor Clutches are provided for safe transportation for passengers in the event that the elevator stops between floors. If passengers become trapped in the elevator, they may try to escape by opening the car doors between landings, putting themselves at risk of serious injury or death.

www.verticalexpress.com

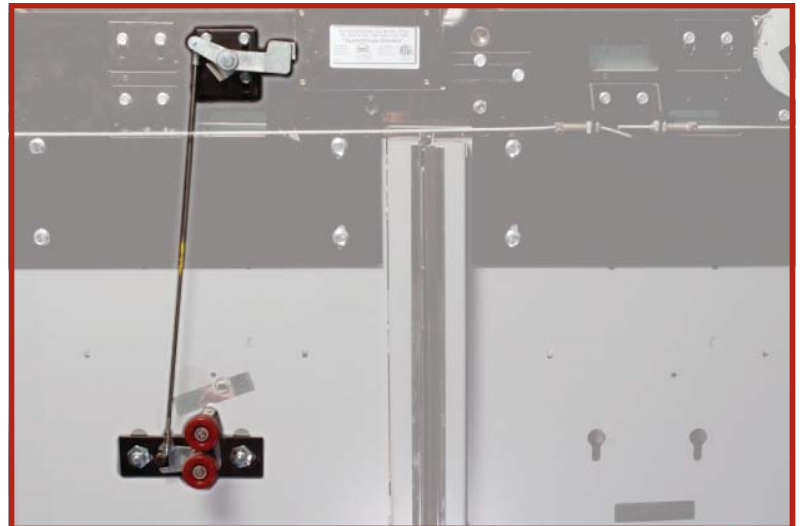


Required by ASME A17.1-2000 code, a door restrictor clutch prevents elevator car doors from being opened if the elevator is outside the unlocking zone. Thus, passengers are unable to force the elevator car doors open if the elevator stops or stalls between floors for any reason, such as in the event of a power failure. The doors will remain closed until trained personnel arrive to open them.

Available for the following door sizes:

- Single Speed – 32" or greater
- Center Opening – 32" or greater
- Two Speed – 46" or greater
- Two Speed/Center Opening – 74" or greater

Vertical Express pick-up rollers are required with the restrictor clutch [one per floor, per elevator]



By installing a new Vertical Express Door Restrictor Clutch, you'll increase safety, reduce liability while making a sound investment in your building's future. Contact your local Vertical Express sales representative or call (866) 448-3789 toll free.

(866) 448-3789

expert service • express delivery

Door Restrictor Clutch Kits

For Vertical Express Contractor Use Only

Once complete, fax to (901) 261-1807. Be sure to include all surveys.

Office: _____ Date: _____ By: _____

Job Name: _____ Job Number: _____

PO Number: _____ Tel: _____

To place a direct order, call (866) 448-3789.

If car door to hatch sill space (A) is $\geq 3"$, select: (see diagram 1 below)

	Single Speed		Center Opening	Two Speed		Two Speed Center Opening	
	Door Widths		Door Widths	Door Widths			
Clear Opening Height	32" and up		32" and up	$\geq 46"$		$\geq 74"$	
	Left Hand	Right Hand		Left Hand	Right Hand	Left Hand	Right Hand
$\leq 84"$	200AAE8	200AAE9	200AAE10	200AAE11	200AAE12	200AAE13	
$> 84"$	200AAE14		200AAE14	200AAE14		200AAE14	

Reduced Clearance - If car door to hatch sill space (A) is $\geq 3"$, but $> 2 \frac{1}{2}"$ select: (see diagram 1 below)

	Single Speed		Center Opening	Two Speed		Two Speed Center Opening	
	Door Widths		Door Widths	Door Widths			
Clear Opening Height	32" and up		32" and up	$\geq 46"$		$\geq 74"$	
	Left Hand	Right Hand		Left Hand	Right Hand	Left Hand	Right Hand
$\leq 84"$	200AAE22	200AAE23	200AAE24	200AAE25	200AAE26	200AAE27	
$> 84"$	200AAE28		200AAE28	200AAE28		200AAE28	

Pick-up Rollers

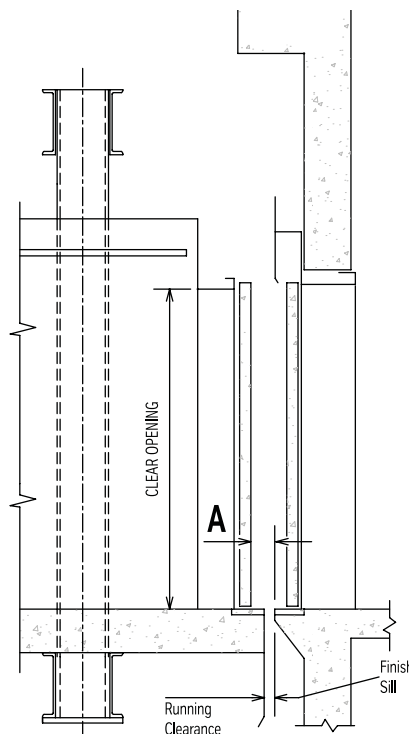
Vertical Express Pick-up Rollers
(does not include interlocks nor tracks).

Quantity	Description	Part Number
	Left Hand	9875256
	Right Hand	9875268

GAL/ECI Pick-up Rollers
(reuses GAL/ECI interlocks and tracks).

Quantity	Description	Part Number
	Left Hand	9722634
	Right Hand	9722725

Diagram 1



Door Restrictor Clutch

Part Number	Quantity
200AAE8	
200AAE9	
200AAE10	
200AAE11	
200AAE12	
200AAE13	
200AAE14	
200AAE22	
200AAE23	
200AAE24	
200AAE25	
200AAE26	
200AAE27	
200AAE28	

Vertical Express