



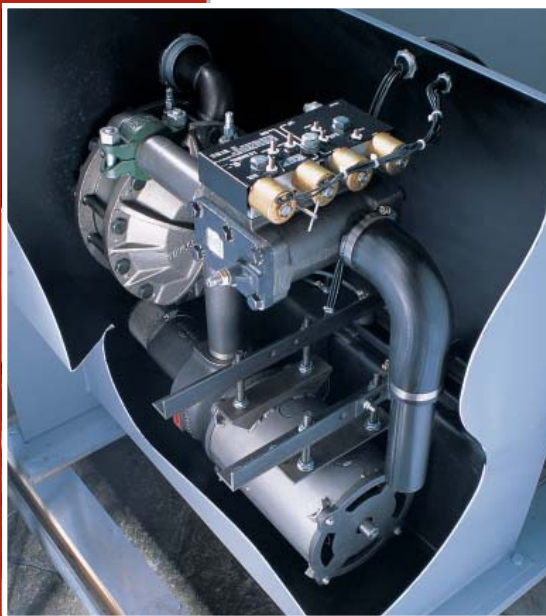
vertical express

Power Units

Premium Hydraulic Performance

Our custom built, job specific power unit replacements can enhance virtually any hydraulic application. Three new horsepower motors have been added to our product line which allows for a wider range of application needs. The superior cast design and precise operation of our power units increase the leveling accuracy and improve passenger safety. Nothing compares with the smooth, quiet ride that only a Vertical Express Power Unit and I-Series® Valve provides.

www.verticalexpress.com



Quality hydraulic power units.

At Vertical Express, we pride ourselves in adhering to the highest standard of quality. Our exclusive valve, silencer and motor designs contribute to the overall dependability and outstanding performance of the best-selling hydraulic power unit on the market.



Dry Power Unit

Hydraulic elevators only perform as well as the valve.

The valve governs the flow of oil through your elevator's hydraulic system. If the flow of oil is erratic, the performance of your elevator will be as well causing your elevator to level improperly. The I-Series by Vertical Express is the solution. The pistons in our I-2 and I-3 valves, which vary in size and speed, regulate oil flow to and from the hydraulic jack. They are machined with such precision that internal O-rings are not needed, reducing friction and making the operation of the elevator smoother, quieter and more consistent.



I-2 Valve



Silencer

Silence is golden.

Vertical Express' silencer is a time-proven hydraulic vibration dampening system. This unit can be integrated into the power unit or mounted outside to effectively remove vibrations that may otherwise be felt by passengers inside the car.

Power units created precisely for you.

Each and every power unit is built according to the options you choose and then pre-adjusted and tested specifically for your job conditions. Shutoff valves, pipe stand assemblies, Victaulic® couplings and other accessories can be shipped with your power unit at your request. We also pre-wire your power unit terminals for easy field connection to solenoids and motor.

Tested for Accuracy

Before every Vertical Express valve leaves our U.S. manufacturing facility, it is tested to ensure that there are no leaks and that it meets pressure and load requirements. A custom-built welded manifold ties the valve to the power unit. The manifolds are tested to twice the working pressure of the jack to ensure proper functionality. Contact your local Vertical Express sales representative or call 866-448-3789.

(866) 448-3789

expert service • express delivery

Power Units

For Vertical Express Contractor Use Only

Once complete, fax to (901) 261-1807. Be sure to include all surveys.

Office: _____ Date: _____ By: _____

Job Name: _____ Job Number: _____

PO Number: _____ Tel: _____

To place a direct order, call (866) 448-3789.

Select Required:

- | | |
|--|---|
| <input type="checkbox"/> AP Power Unit (Dry Unit) | <input type="checkbox"/> 2" Shut-off Valve (less than 215 GPM) Qty: _____ |
| <input type="checkbox"/> EP Power Unit (Submersible Unit) | <input type="checkbox"/> 3" Shut-off Valve (over 215 GPM) Qty: _____ |
| <input type="checkbox"/> Viscosity Control | <input type="checkbox"/> Isolation Coupling Qty: _____ |
| <input type="checkbox"/> Oil Cooler | <input type="checkbox"/> Constant Lowering Speed (Maxton) |
| <input type="checkbox"/> Overspeed/Rupture Valve | <input type="checkbox"/> Loadweiger Pressure Switch |
| <input type="checkbox"/> Inline <input type="checkbox"/> 90° | <input type="checkbox"/> Tank Shut-off Valve for Isolation of Oil |
| <input type="checkbox"/> Seismic Requirements | <input type="checkbox"/> Low Pressure Switch |
| <input type="checkbox"/> Canadian B44 Code | <input type="checkbox"/> High Pressure Switch |
| <input type="checkbox"/> 80 Starts Per Hour | <input type="checkbox"/> Glass Oil Level Sight Gauge |
| <input type="checkbox"/> 120 Starts Per Hour | |

Data Required:

General:
Car Speed: _____
Capacity: _____
Car Weight: _____

Controller:
 New (TAC22)
 Retain Existing Controller
Type: _____
Solenoid voltage: _____
 AC DC
Main Line Voltage: _____
Phase: _____

Jack:
Piston Diameter: _____
Number of Jacks/Elevators: _____

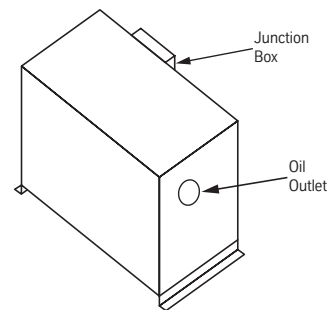
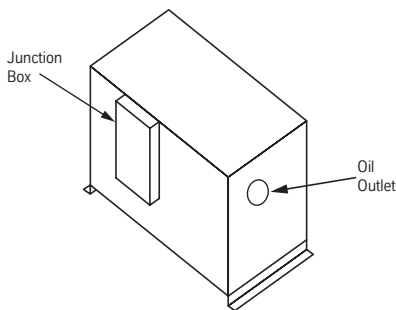
Machine Room Location:
 Adjacent Overhead Below (requires Pressure Switch) Remote - Distance: _____

Power Unit:
Gross Load on Power Unit: _____
Pump Size: _____ GPM
Rise: _____
Loading Class: _____
Oil Line Size: _____
Oil Line Type: Victaulic Threaded (NPT)
Oil Type: Petroleum Synthetic

Existing Data:
Motor HP: _____
Voltage: _____
Amps: _____
Static Pressure: _____
Relief Pressure: _____

Hand of Unit:

- Standard Non-standard



Vertical Express

P.O. Box 2019 Memphis, TN 38101 Tel: (866) 448-3789 (toll-free) Fax: (901) 261-1807 www.verticalxpress.com

All illustrations and specifications are based on information in effect at the time of publication approval. Vertical Express reserves the right to change specification or designs and to discontinue items without prior notification or obligation. v.7.6. Copyright © 2007 Vertical Express Elevator