



vertical express

Replacement Jacks

Lifting Elevators to New Heights.

Vertical Express Replacement Jacks are turned and polished to exact specifications. The accuracy of our manufacturing process ensures that operation of your elevator will be smoother. And the time invested in this often overlooked component makes our jack the longest-wearing in the industry.

www.verticalexpress.com

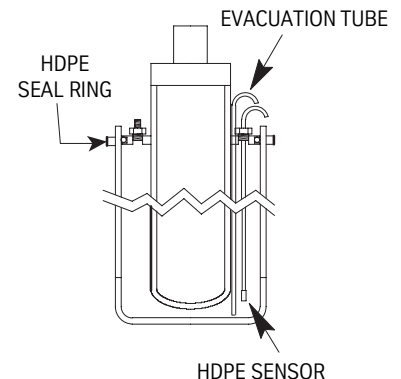


Completely Customizable.

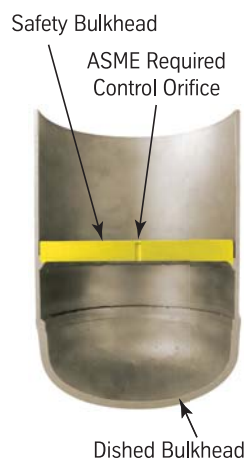
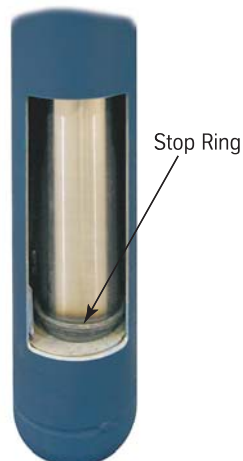
No matter the length, Vertical Express is able to customize a jack specifically for your job. We are able to locate and size the Victaulic® Oil Inlet to your job's specific requirements.

Safety First.

Designed with ASME A17.1 code in mind, our jacks conform to all stated codes. Our jack assemblies include a stop ring, safety and dished bulkheads. In addition, Vertical Express offers a choice of containment protection systems, available upon request. Our corrosion protection complies with code requirements for the monitoring, containment and evacuation of oil and meets the most stringent standards used in the industry today.



Cutaway Views



Contact your local Vertical Express sales representative or call (866) 448-3789 toll-free.

(866) 448-3789

expert service • express delivery

Replacement Jacks

For Vertical Express Contractor Use Only

Once complete, fax to (901) 261-1807. Be sure to include all surveys.

Office: _____ Date: _____ By: _____

Job Name: _____ Job Number: _____

PO Number: _____ Tel: _____

To place a direct order, call (866) 448-3789.

Select Required:

Complete Jack Unit Casing Only Plunger Only

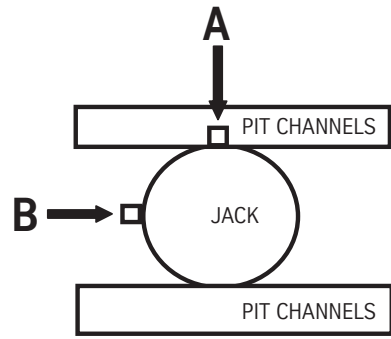
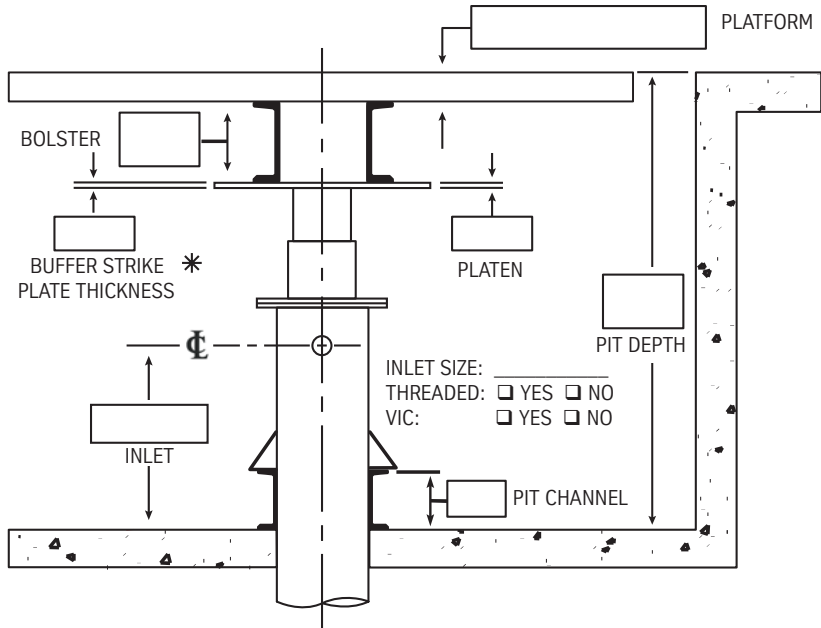
Number of Sections Required: _____ OR Longest Possible Section Length to Install: _____

Data Required:

Capacity: _____ Overtravel (Top): _____ FT _____ IN (6" STD) ** Required if New Buffers are Purchased
 Gross Load on Jacks: _____ Overtravel (Bottom)***: _____ FT _____ IN (10" STD) *** Bottom Overtravel Must Equal Bottom Runby + Buffer Stroke + (1-1.5")
 Upspeed: _____ FPM
 Down Heavy Speed: _____ FPM**
 Net Travel: _____ FT _____ IN

Piston: _____ Cylinder: _____
 Piston O.D.: _____ Cylinder O.D.: _____
 Circumference: _____ OR Circumference: _____
 Piston Wall: _____ Cased Hole Diameter: _____

Dimensions Required:



Indicate Where You Want the Inlet Located

A B

NOTE: _____

* ONLY NEED IF NEW BUFFERS ORDERED

Optional Products:

Tape Wrap Pit Channels – Length*: _____
 Oversized Cylinder Other: _____
 Jack Protection (Complete Enclosed System)
 Platen

* Only Required if New Channels are Purchased